



PRODUCT GUIDE

FLCMVW



DOCUMENT NUMBER

REVISION DATE

20190117

NOTICE

The manufacturer will accept no responsibility for any electrical damage resulting from improper installation of this product, be that either damage to the vehicle itself or to the installed device. This device must be installed by a certified technician. Please review the Installation Guide carefully before beginning any work.

WELCOME

Congratulations on the purchase of your VW solution. You are now a few simple steps away from enjoying your new remote starter unit with enhanced features.

Before starting your installation, please ensure that your VW module is programmed with the correct firmware for your vehicle and that you carefully review the install guide.

TABLE OF CONTENTS

| | |
|----------------------------------|----|
| Box Contents | 3 |
| Tach Programming Procedure | 4 |
| Remote Programming Procedure | 5 |
| Valet Mode Programming Procedure | 6 |
| Compatible Accessories | 7 |
| Online Module Settings | 9 |
| Module Diagnostics | 10 |
| Remote Starter Error Codes | 11 |
| Module Reset Procedure | 12 |

NEED HELP?

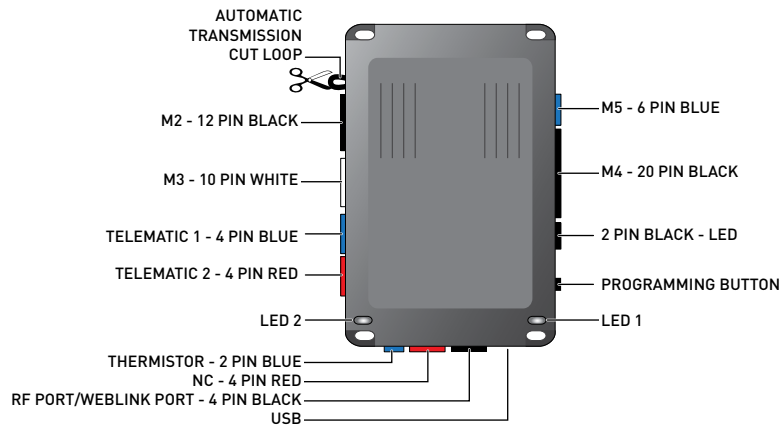
 **1 866 427-2999**

 support@idatalink.com

 idatalink.com/support
www.12voldata.com/forum
www.facebook.com/groups/idatatech

BOX CONTENTS

MODULE



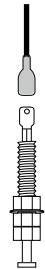
ATTENTION: To complete this installation some accessories may be required. Visit our website to see all the required accessories for your vehicle. Use the T-harness ADS-THR-xxx to complete the installation. Accessories sold separately.

STICKERS

2X



HOOD SWITCH



01



START vehicle for 15 seconds.

02



Press and hold the brake pedal.

03



Press and release the module's programming button. (OR if the remotes are already programmed to the vehicle, press and hold the start button of the remote for 2.5 seconds.)

04



Wait, LED 2 will flash GREEN. (See the Module Diagnostics page)

05



Release the brake pedal.

06



Module Programming Procedure completed.

| AFTERMARKET REMOTE PROGRAMMING: NOTES | |
|--|--|
| <p>I All aftermarket remotes must be programmed to the RF-Kit.</p> <p>Refer to the RF-Kit user guide for aftermarket remote features and programming procedures.</p> | |

>>



NOTE: In Valet Mode, the Remote starter is not functional. Keyless entry, Lock and Unlock will remain functional. See RF kit user manual for alternate valet mode programming.

01



Time restriction. Complete next step within 7 seconds.

02



Cycle ignition ON twice [2x OFF/ON] rapidly.

03



Press and release the BRAKE pedal three times [3x].

04



Parking Light will flash once [1x] then will flash twice [2x].

05



Set ignition to OFF position.

06



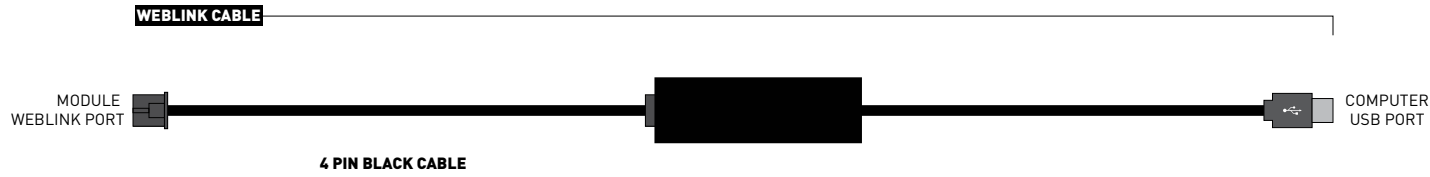
Valet Mode Programming Procedure completed.

>>

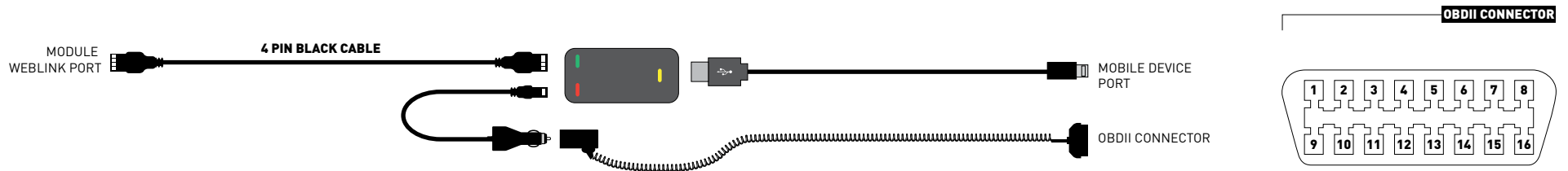


To exit valet mode: repeat steps 1 to 5.

WEBLINK CABLE (required accessory sold separately)



WEBLINK MOBILE (accessory sold separately)

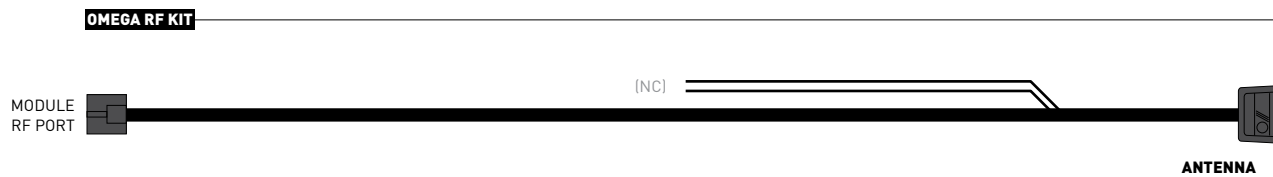


TELEMATIC KIT (accessory sold separately)

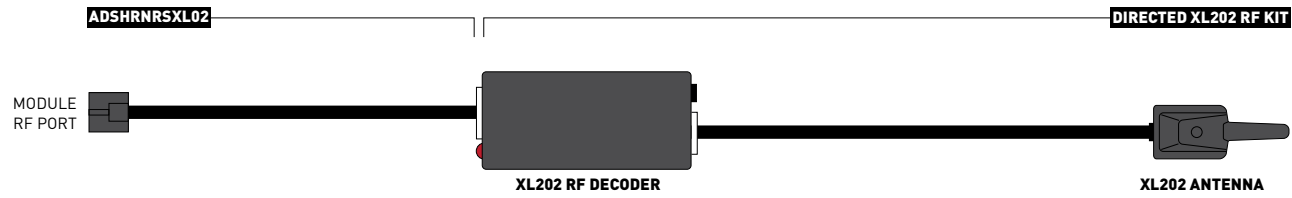


*For SmartStart, use the module's RED Telematic port.

RF KIT (accessories sold separately)



RF KIT (accessories sold separately)



| WEB PROGRAMMABLE MENUS | DESCRIPTION |
|---|--|
| MENU 1 – Remote Starter | RS related configuration options |
| MENU 2 – Doorlock Options | Convenience feature configuration options |
| MENU 3 – Security Options | Alarm activation and settings |
| MENU 4 – AUX function assignments | Set transmitter AUX buttons controls |
| MENU 5 – Programmable outputs (POC) | Set actions for programmable outputs |
| MENU 6 – Pulse Timer Output Configuration (PTO) | Set duration for pulse timer outputs (if used) |
| MENU 7 – Input Configurations | Set inputs for Auto by firmware/Data/Analog |
| MENU 8 – Output Configurations | Set outputs for Auto by firmware/Data/Analog |

Programming options are available through Weblink and Weblink Mobile only.

| TEST MODULE | | LED 1 STATUS | DIAGNOSTIC |
|-------------|---------------------------|----------------------|--|
| I | DURING MODULE PROGRAMMING | Flashing RED | Missing/wrong information from firmware or vehicle. |
| | | Solid RED | Module waiting for more vehicle information. |
| | | Flashing GREEN | Additional steps required to complete module programming. |
| | | Solid GREEN then OFF | Module correctly programmed. |
| | | OFF | No activity or module already programmed. |
| II | DURING TACH PROGRAMMING | 1 GREEN flash | Tach signal programmed in Analog |
| | | 2 GREEN flashes | Tach signal programmed in Data |
| | | 3 RED flashes | No tach signal detected |
| | | 4 RED flashes | System is in valet mode |
| | | 5 RED flashes | Tach set for 'VTS'. No tach programming required |
| | | 6 RED flashes | Tach set for 'assumed start'. No tach programming required |
| III | DURING REMOTE START | Flashing RED | Module incorrectly programmed. |
| | | Solid RED | Module incorrectly programmed. |
| | | Flashing GREEN | Module correctly programmed and operational. |
| | | Solid GREEN then OFF | Reset in progress. |
| | | OFF | Invalid ground when running status from remote starter. |
| IV | WITH IGNITION OFF | Flashing RED | Module incorrectly programmed or connected. |
| | | Solid RED | Module not programmed. Waiting for more vehicle information. |
| | | Flashing GREEN | False ground when running status from remote starter. |
| | | Solid GREEN then OFF | Reset in progress. |
| | | OFF | Module at rest and ready for a remote start sequence. |

| REMOTE STARTER ERROR CODES: NOTES | [X] NUMBER OF PARKING LIGHT FLASHES | DIAGNOSTIC |
|---|---|---|
| I WARNING: The following applies only when the parking lights are connected and supported by the system. | 01 | Engine running. |
| | 02 | Key in ignition at ON position. |
| II After a remote starter failure, the parking lights will flash three [3x] times, then will flash [X] number times to indicate an error code. See table. | 03 | Door is open. |
| | 04 | Trunk is open. |
| | 05 | Foot brake is ON. |
| | 06 | Hood is open. |
| | 07 | The reservation is OFF. (Manual transmission only) |
| | 08 | Tach failure. |
| | 09 | The vehicle is moving (VSS). |
| | 10 | System is in Valet Mode. |
| | 11 | CAN communication failure |
| | 12 | RS not synchronized. Start vehicle with OEM key for 15 sec before trying a new RS sequence. |
| | 13 | Bypass problem. |

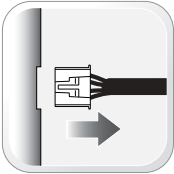
| REMOTE STARTER SHUTDOWN ERROR CODES: NOTES | [Y] NUMBER OF PARKING LIGHT FLASHES | DIAGNOSTIC |
|---|---|---|
| I WARNING: The following applies only when the parking lights are connected and supported by the system. | 01 | Engine tach signal is lost. |
| | 02 | Emergency brake is lost. |
| II If the engine shuts down after a remote starter sequence: Press and hold the Trunk button and the Start button at the same time for 2.5 seconds when using a 1-WAY remote. OR Press once [1x] on button "4" when using a 2-WAY remote. The parking lights will flash four [4x] times, then will flash [Y] number times to indicate an error code. See table. | 03 | Foot brake is ON. |
| | 04 | Hood is open. |
| | 05 | Engine RPM limiter is ON. |
| | 06 | Glow plug timeout error. |
| | 07 | Vehicle is moving (VSS). |
| | 08 | N/A |
| | 09 | N/A |
| | 10 | Door is open. |
| | 11 | CAN communication failure during RS sequence. |
| | 12 | RS not synchronized. Start vehicle with OEM key for 15 sec before trying a new RS sequence. |
| | 13 | Takeover is not allowed. |
| | 14 | Shutdown error, board overheat protection. |

>>



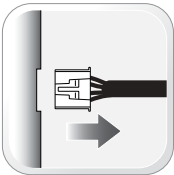
The following procedure resets the module programming to the vehicle. It does not reset any settings configured online.

01



Disconnect all connectors from module except the M1 BLACK 8-pin connector and the M4 BLACK 20-pin connector.

02



Disconnect the M1 BLACK 8-pin connector and the M4 BLACK 20-pin connector.

03



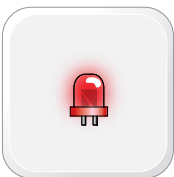
PRESS AND HOLD the module's programming button while connecting the M1 BLACK 8-pin connector and the M4 BLACK 20-pin connector.

04



Wait, LED 1 will flash RED. RELEASE programming button.

05



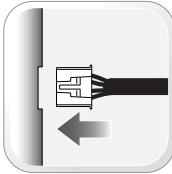
LED 1 will turn RED for 2 seconds.

06



Module RESET completed.

07



Reconnect all connectors.

08



Repeat programming procedure.

>>



Failure to follow procedure may result with a DTC or a CHECK ENGINE error message.